



# POWERCLEAN SALT



**CMP** POOL  
PRODUCTS

[www.c-m-p.com](http://www.c-m-p.com)

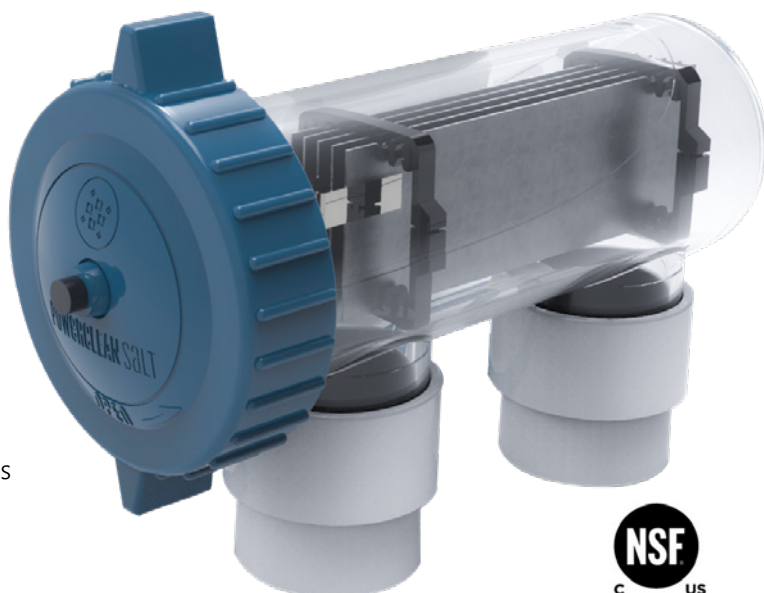
# Affordable Chlorine Generation for Residential Pools

- Pools up to 40,000 gallons
- Auto shut-off for low salt, low temp or low flow
- New grab handles on cell cap for easier removal
- Easy to read upgraded design for control units
- Heavy duty custom cleaning tool included
- Upgraded & reinforced salt cell body adds strength and durability

## SMART FEATURES

**CLEAR CELL HOUSING:** It's easy to inspect the cell plates and see when it's time to clean. With other salt generators you have to guess when the plates are dirty.

**UNIVERSAL SENSOR:** A built-in sensor inside the cell constantly checks for faults due to flow, temperature or calcium build-up.



## DESIGNED WITH CARE & MAINTENANCE IN MIND

**CLEAN WITH ZERO ACID:** Cell plates are completely removable for easy cleaning with no dangerous chemicals.

**SUPERIOR CELL PLATES:** Wide-set individually powered cell plates help prevent scale "bridging" that reduces the life of competing salt cells.



## ORDERING GUIDE

CMP PART NUMBER	DESCRIPTION	POOL SIZE - STANDARD	POOL SIZE - HIGH DEMAND*
52000-120-000	POWERCLEAN® SALT 320	20,000 GAL	14,000 GAL
52000-140-000	POWERCLEAN® SALT 540	40,000 GAL	28,000 GAL

\*High demand pools may require more output to maintain a proper chlorine residual. High demand may include hot or humid climates, high bather loads, or environmental factors. Also add a DEL Advanced Sanitizer system to reduce demand in high demand environments.

## SYSTEM COMPARISON†

SMALL SYSTEM OUTPUT		LARGER SYSTEM OUTPUT	
MODEL	CHLORINE OUTPUT (LBS/DAY)	MODEL	CHLORINE OUTPUT (LBS/DAY)
POWERCLEAN® SALT 320	0.78	POWERCLEAN® SALT 540	1.35
iCHLOR® 15	0.60	iCHLOR® 30	1.00
		SALT & SWIM®	0.98
		TRUCLEAR® 11K	0.95

† Systems chosen for comparison based on relative system cost. Output comparison per manufacturer supplied data available at time of printing. iCHLOR® is a registered trademark of Pentair Water Pool and Spa, Inc. TRUCLEAR® is a registered trademark of Zodiac International, S.A.S.U.. Salt & Swim® is a registered trademark of Hayward Industries, Inc.



POOL | SPA | BATH  
CS@c-m-p.com | www.c-m-p.com